

Call us today for an appointment
to view one of our current projects
(208) 859-2977
and see what a custom builder can do for

Give Us A Call We
are ready to make
the adjustments
you want.
It's your dream.
It's your home.
It's your
lifestyle.

Timberstone Builders

Custom Homes
Remodels, Additions and Decks

| [About Us](#) | [Contact Us](#) |

[Home](#) [Our Services](#) [Available Homes](#) [Floor Plans/ Other Services](#) [Portfolio / Gallery](#) [About Us](#) [Testimonials](#)



Andy & Kimberly Jean - 7042 Wapiti Way Melba, Idaho 83641 Phone: (208) 495-2677 Fax: (208) 495-2881 Cell: (208) 859-2977

Our Promise

To Design And Build The Dream Home
That's Perfect For You And Your Family

To Ensure Your Home Will Be Built With
Brand-Name Materials Of The Very Highest
Quality And Durability

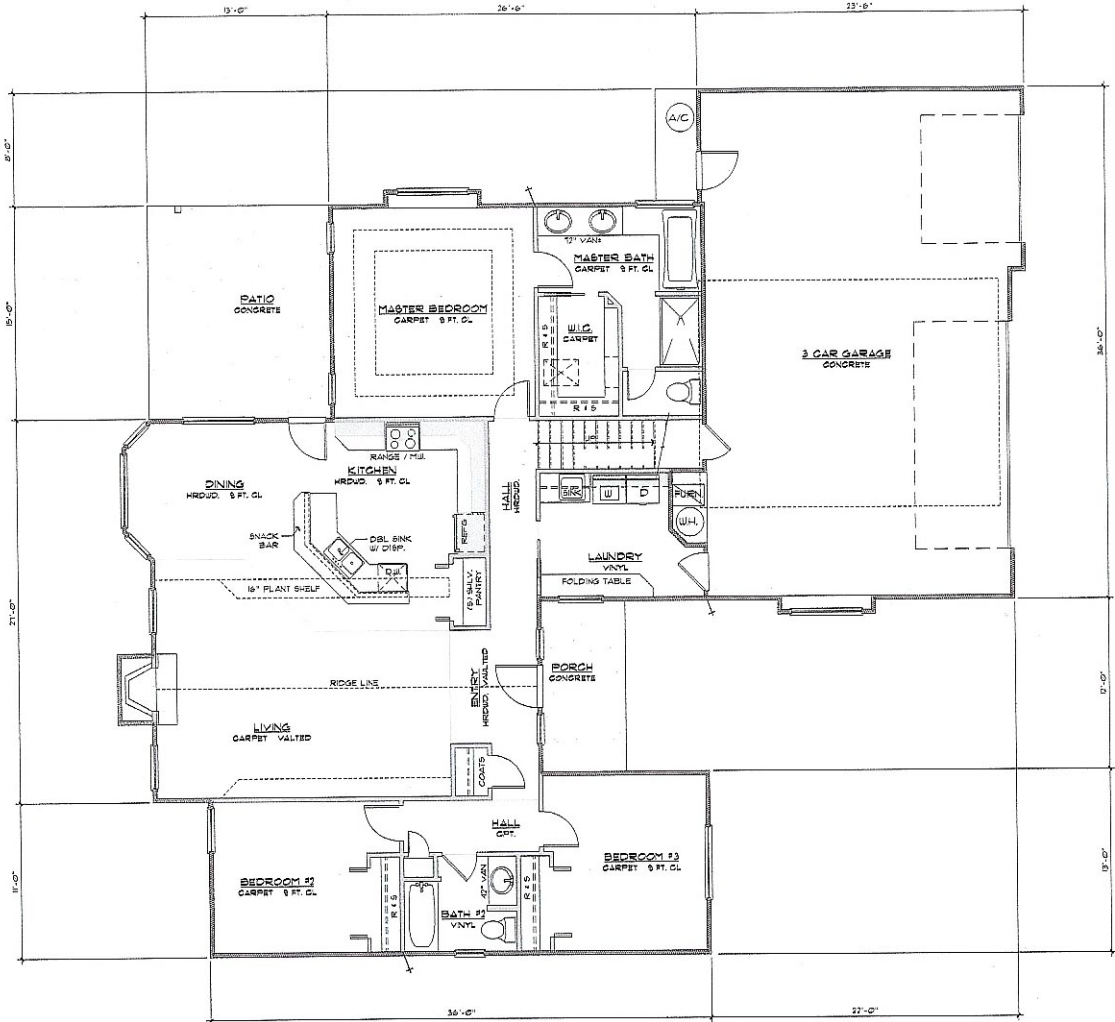
To Use Our Years Of Experience, Fine
Craftsmanship And Most Current Technology
Available In Creating Your New
Home To Fit Your Personality

Give Us A Call And We'll Talk
Andy & Kimberly Jean
7042 Wapiti Way Melba, Idaho 83641
Phone: (208) 495-2677
Fax: (208) 495-2881
Cell: (208) 859-2977
Timberstonelle@yahoo.com



[Home](#) | [Services](#) | [Available Homes](#) | [Floor plans/ Other Services](#) | [Portfolio / Gallery](#) | [About Us](#) | [Testimonials](#) | [email](#)





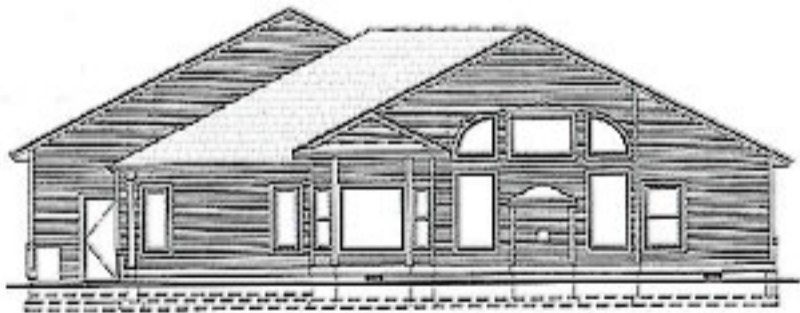
FLOOR PLAN

SCALE: 1/4" = 1'-0"

BUILDING AREA	
MAIN FLOOR	1741 SQ. FT.
BONUS ROOM	344 SQ. FT.
GARAGE	816 SQ. FT.
TOTAL	2801 SQ. FT.



FRONT BUILDING ELEVATION
SCALE: 1/4" = 1'-0"



REAR BUILDING ELEVATION
NAD 10/11/10